

---

# OxisResearch™

A Division of OXIS Health Products, Inc.

---

## BIOXYTECH® AOP-450™

Colorimetric, Quantitative Assay for Total Antioxidant Potential (Aqueous Samples)

For Research Use Only. Not For Use In Diagnostic Procedures.

Catalog Number

---

## INTRODUCTION

---

Oxidative stress has been implicated in a number of diseases such as atherosclerosis<sup>1</sup>, chronic inflammatory disease<sup>2</sup>, chronic renal failure<sup>3</sup>, and cancer<sup>4</sup>. It is a condition where an imbalance exists between the production of reactive oxidizing species and the body's ability to neutralize these intermediates, resulting in cellular damage. The body has designed several physiological responses to oxidative stress including counterbalances<sup>5</sup> such as enzymes and variously functionalized molecules (see examples below) that effectively neutralize these damaging species. These antioxidants can be either water or lipid soluble, and are localized transiently throughout various tissues, cells and cell types.

### Classification Examples

Enzymes: Superoxide Dismutase  
Catalase  
Glutathione Peroxidase

Large Molecules: Albumin  
Ferritin  
Ceruloplasmin

Small Molecule : Ascorbic Acid  
 $\alpha$ -Tocopherol  
 $\beta$ -Carotene  
Uric Acid

Given the multiplicity of antioxidant pathways, their centrality in the prevention of oxidant stress, and the influences of lifestyle and nutritional supplements on an individual's antioxidant capacity, it is important to be able to quantitatively measure the total antioxidant capacity or antioxidant power with biological specimens<sup>6-11</sup>.

## **PRINCIPLES OF PROCEDURE**

The reduction potential of the sample or standard effectively converts Cu+2 to Cu+1, thus changing the ion's absorption characteristics. This reduced form of copper will selectively form a stable 2:1 complex with the chromogenic reagent with an absorption maximum at ca. 450 nm. A known concentration of Trolox is used to create a calibration curve, with the data being expressed as mM Trolox equivalents or in  $\mu$ M copper reducing equivalents. A study was performed to evaluate the correlation between the concentration of principal antioxidants in human serum and the value obtained for total antioxidant power using this method with the results presented in **Figure 1**. Multivariate analysis of the obtained results yields a very high significance. The results obtained with the Total Antioxidant Power Assay for a series of serum samples were also compared to the resistance to oxidation of the serum lipids in these samples. The results of this study also show that these two parameters are highly correlated. The higher the total antioxidant power, the more protected the serum lipids are from oxidation.

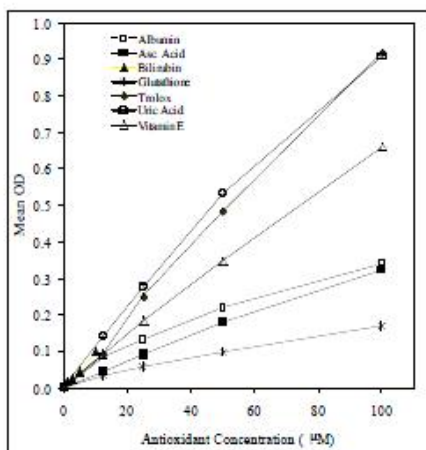


Figure 1: Relationship between antioxidant type and reduction from Cu<sup>+2</sup> to Cu<sup>+1</sup>.

### **MATERIALS PROVIDED**

- R1 ( Dilution Buffer) 60ml
- R2 (Copper Solution) 5ml
- Trolox Standard 1 vial
- Stop Solution 5ml

### **MATERIALS NEEDED BUT NOT PROVIDED**

- Microplate reader with a 450 nm filter
- Adjustable micropipettes (10 – 1000 µL) and tips
- Ethanol
- Deionized water
- Vortex

### **STORAGE**

Store the components of this kit at the temperatures specified on the labels. Unopened reagents are stable until the indicated kit expiration date. Aliquot the Trolox Standard after reconstitution and freeze at -80°C.

### **WARNINGS AND PRECAUTIONS**

Use aseptic technique when opening and dispensing reagents. This kit is designed to work properly as provided and instructed. Additions, deletions or substitutions to the procedure or reagents are not recommended, as they may be detrimental to the assay.

### **PROCEDURAL NOTES**

Allow Dilution Buffer, Copper Solution and Stop Solution to equilibrate to room temperature for 30 minutes prior to running the assay.

To minimize errors in absorbance measurements due to handling, wipe the exterior bottom of the microplate wells with a lint-free paper towel prior to inserting into the plate reader.

### **SAMPLE PREPARATION**

All samples should be stored at -70°C *at all times* prior to assay. Apply the samples to the assay immediately upon thawing. Samples with a Trolox equivalent concentration greater than 2.0 mM should be diluted with pH 7.0 PBS prior to assay. Sample preparation is subject to the discretion and approval of the principal investigator, and changes may occur to optimize or better complement experimental design.

**NOTE:** Ethylene diamine tetraacetic acid (EDTA) is detrimental to the function of the assay and *must not be present at any concentration in any sample type.*

**Urine:** Collected samples may be assayed directly or diluted with pH 7.0 PBS where appropriate.

**Tissue Lysate:** Homogenize tissue sample on ice with ice-cold pH 7.0 PBS then centrifuge at 3000 · g for 12 minutes at 4°C. Aliquot the supernatant for storage at –70°C, protein determination and subsequent assays.

**Cell Culture:** Wash cells 2-3 times with ice-cold pH 7.0 PBS prior to lysis. Lyse cells by homogenization or sonication with ice-cold pH 7.0 PBS then centrifuge at 3000 · g for 12 minutes at 4°C. Aliquot the supernatant for storage at –70°C, protein determination and subsequent assays.

**Plasma:** Collect blood with sodium citrate and centrifuge at 3000 · g for 12 minutes at 4°C. Remove the plasma and aliquot for storage at –70°C, protein determination and subsequent assays. Sample results can alternatively be expressed in mL of plasma.

**Food:** This can vary considerably from one food to the next and requires foresight and discretion from the principal investigator. In many cases liquid food samples such as juice and tea can be assayed directly without any processing. Liquid samples that contain high amounts of protein and/or fiber or solid foods should be processed as indicated below.

Solid Food: Homogenize food sample on ice in ice-cold pH 7.0 PBS then centrifuge at 3000 · g for 12 minutes at 4°C. Aliquot the supernatant for storage at –70°C, protein determination and subsequent assays.

Liquid Food: Centrifuge at 3000 · g for 12 minutes at 4°C. Aliquot the supernatant for storage at –70°C, protein determination and subsequent assays.

## **STANDARD CURVE PREPARATION**

**PLEASE NOTE:** The Trolox Standard vial is under vacuum.

### **TO RECONSTITUTE THE TROLOX STANDARD:**

**Preferred Method** – Add 2.0 mL of Ethanol directly to the Trolox Standard vial with a needle and syringe by puncturing the rubber stopper with the needle. Vortex the vial for 30-60 seconds, or until the standard is completely dissolved. The concentration is now 2.0 mM. Slowly remove the rubber stopper, allowing the vacuum seal to break and proceed to **Table 1** for the standard curve dilutions.

**Alternative Method** – Not Recommended - WARNING!!! The solid Trolox can become airborne due to the opening process or due to the turbulence created during pipetting and reconstitution. Loss of material will greatly affect the accuracy of your assay – this method is performed at the user's risk and discretion. Slowly lift a corner of the rubber stopper until the vacuum seal is broken. Now remove the stopper and slowly add 2.0 mL of Ethanol to the vial. Recap the vial with the same rubber stopper and Parafilm or tape the stopper to the vial then vortex for 30-60 seconds, or until the standard is completely dissolved. The concentration of this standard is now 2.0 mM. Carefully remove the stopper and proceed to **Table 1** for the standard curve dilutions.

The reconstituted standard can be aliquoted and stored at –70°C for up to one year. Use the following table to dilute the 2 mM Trolox Standard and construct a six-point standard curve.

**Table 1: Standard Curve Preparation**

Standard	Uric Acid Conc. (mM)	Vol. of Deionized Water ( $\mu$ L)	Transfer Volume ( $\mu$ L)	Transfer Source	Final Volume ( $\mu$ L)
S5	2.0	1500	-	2 mM Stock	1000
S4	1.0	500	500	S5	500
S3	0.5	500	500	S4	500
S2	0.25	500	500	S3	500
S1	0.125	500	500	S2	1000
S0	0	500	-	-	500

**ASSAY PROCEDURE**

1. Dilute both Samples and Standards 1:40 in the provided Dilution Buffer (e.g. 15  $\mu$ L serum + 585  $\mu$ L Dilution Buffer). See **Scheme I** for a suggested plate layout.
2. Place 200  $\mu$ L of diluted Samples or Standards in each well. Reagent Blanks (BLK) should contain Dilution Buffer in place of Standard or Sample.
3. Read the plate at 450 nm for a reference measurement.
4. Add 50  $\mu$ L of Copper Solution to each well and incubate for 3 minutes at room temperature.
5. Add 50  $\mu$ L of Stop Solution.
6. Read the plate a second time at 450 nm.

**Scheme I: Sample Plate Layout**

	1	2	3	4	5	6	7	8	9	10	11	12
A	S0	S0	U3	U3	U11	U11	U19	U19	U27	U27	U35	U35
B	S1	S1	U4	U4	U12	U12	U20	U20	U28	U28	U36	U36
C	S2	S2	U5	U5	U13	U13	U21	U21	U29	U29	U37	U37
D	S3	S3	U6	U6	U14	U14	U22	U22	U30	U30	U38	U38
E	S4	S4	U7	U7	U15	U15	U23	U23	U31	U31	U39	U39
F	S5	S5	U8	U8	U16	U16	U24	U24	U32	U32	U40	U40
G	U1	U1	U9	U9	U17	U17	U25	U25	U33	U33	U41	U41
H	U2	U2	U10	U10	U18	U18	U26	U26	U34	U34	BLK	BLK

**CALCULATIONS**

1. Calculate the net absorbance by subtracting the absorbance readings from step 3 from those in step 6.
2. Plot the net absorbance vs. Trolox concentration. A typical standard curve is shown in **Figure 2**.

Samples can be expressed in terms of  $\mu$ M Trolox equivalents by solving for “x” from your generated standard curve equation (see example below). To express values in  $\mu$ M copper reducing equivalents (CRE’s), multiply the “x” value coefficient by 2189  $\mu$ M.

$$y = mx$$

where: y = y-axis value (OD readings)

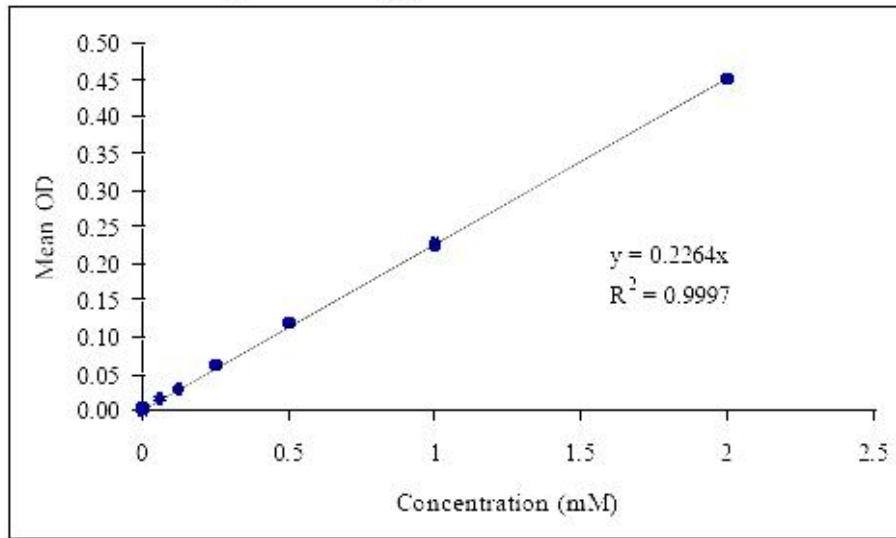
x = x-axis value (Trolox concentration)

m = slope

Given from the standard curve provided on the next page:  $m = 0.2264$

If “y” has an OD value of 0.23 then “x” equals 1.0 mM Trolox equivalents. To express as CRE’s, multiply the mM equivalents of Trolox by 2,189 to obtain the CRE value.

**Figure 1: Typical Standard Curve**



---

## REFERENCES

1. Brook, R.; (2008) *Clin. Sci. (Lond)*. **115**:175-187
2. Cerutti, P. and Trump, B.; (1991) *Cancer Cell* **3**:1-7
3. Cottone, S., et al.; (2008) *J. Nephrol.* **21**:175-179
4. Trachootham, D., et al.; (2008) *Antioxid. Redox Signal.* **10**:1343-1374
5. Frei, B., et al.; (1992) *Molecular Biology of Free Radical Scavenging System* 23-45
6. Ciencewicki, J., et al.; (2008) *J. Allergy Clin. Immunol.* **122**:456-468
7. Kieth, M., et al.; (1998) *J. Am. Coll. Cardio.* **31**:1352-1362
8. Van-Zoeren-Grobbe, et al.; (1997) *Acta Pediatrics* **86**:1356-1362
9. Allard, J.P., et al.; (1998) *Am. J. Clin. Nutr.* **67**:143-147
10. Santini S.A., et al.; (1997) *Diabetes* **46**:1853-1858
11. Fatokun, A., Stone, T. and Smith, R.; (2008) *Front. Biosci.* **13**:3288-3311

---

## LIMITED WARRANTY

OXIS Health Products, Inc. warrants that, at the time of shipment, this product is free from defects in materials and workmanship. OXIS Health Products, Inc. makes no warranty, expressed or implied, including, but not limited to, the warranties of fitness for a particular use and merchantability which extends beyond the description of the product on the face hereof, except that this product will meet our specifications at the time of shipment.

OXIS Health Products, Inc. must be notified of any breach of this warranty within 14 days of receipt of this product. No claim shall be honored if OXIS Health Products, Inc. is not notified within this time period, or if the product has been stored in any way other than described in this product insert. The sole and exclusive remedy of the buyer for any liability based upon this warranty is limited to the replacement of this product, or refund of the invoice price of the goods. OXIS Health Products, Inc. shall not be liable otherwise or for incidental or consequential damages, including but not limited to the costs of handling.

OXISResearch™

323 Vintage Park Drive, Suite B  
Foster City, CA 94404-1136 U.S.A.  
Telephone: 650-212-2568 or 800-547-3686  
Fax: 650-212-2569  
[www.oxisresearch.com](http://www.oxisresearch.com)